

## CX-1 STRING MAKING JIG - USER GUIDE

Product Name: CARTEL CX-1 STRING MAKING JIG (Model Number: 970000)

### 1. PRODUCT FEATURES

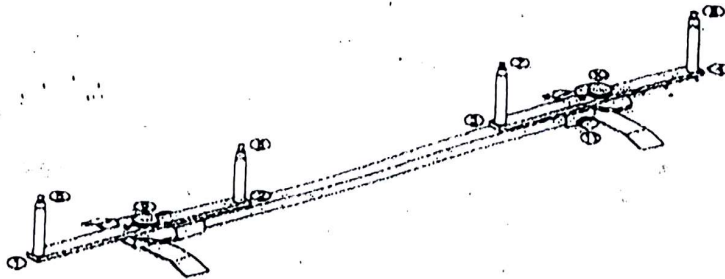
*Cartel CX-1 String Making Jig* is very simple but highly efficient device to produce the string as per user's requirements. It is constructed of solid aluminum structure, allowing a string to be made up to 73" to cover recurve bows and longbows.

### 2. SPECIFICATIONS:

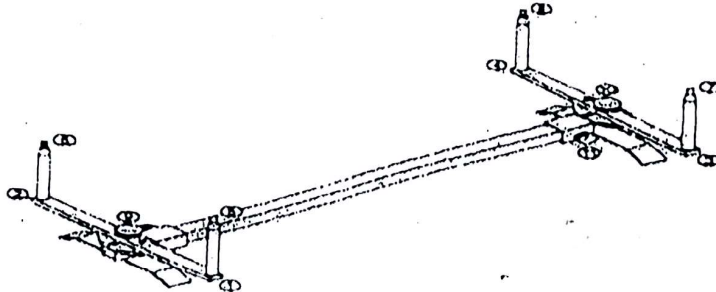
Material	Lightweight Aluminum structure
Overall weight (KG)	2KG
Size (mm)	Length of main frame: 880mm , extendable to 1,570mm Length of side frame: 320mm Height of string post: 145mm

### 3. BASIC INSTRUCTION FOR INSTALLATION AND USE

(Picture No1)



(Picture No2)



- 1) Set Jig as in Picture No1
- 2) Ensure knobs ⑤ ⑥ ⑦ ⑧ ⑨ ⑩ are locked
- 3) Loosen knob ⑪ and adjust to length as required. If you use Dacron string or similar material, you may deduct 1/4" to 3/4" for extra stretching.
- 4) Tightly lock ⑪
- 5) Attach one strand to ① and wind around ② and back to ①. After achieving the intended number of strands, tie off ends with a reef knot.

Number of strands	Bow weight
8	20-30
10	25-35
12	35-45
14	45-55
16	55-65

- 6) Set jig as in Picture No2
- 7) Loosen knobs ⑤ ⑥ ⑦ ⑧ 1/4 turn and wind the hank around until the tension is even. Position knot mid-way between an end frames. Do not over tighten hank at this time.
- 8) Serve between end frame poles in normal fashion. This action will automatically cause torsion on the end frames and the resulting string should be of a very high standard.