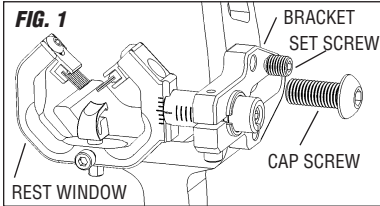
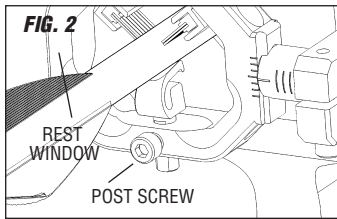


QuikTune® 360 Set-up and Tuning Instructions

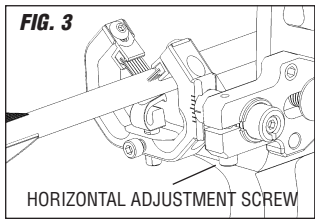
This model has been pre-set to fit most carbon and aluminum arrows.



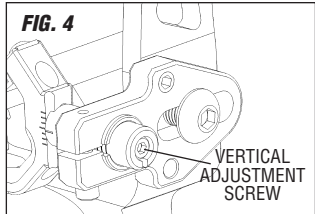
1. (Figure 1) **Mount the rest to the bow.** Use the 5/16" cap screw and smaller set screw shown. Mount the screw in one of the holes that works best with your bow. Tighten both screws.



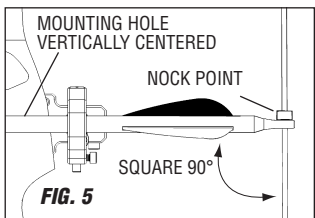
2. (Figure 2) **Adjust the rest to fit your arrow.** Place an arrow into the rest and nock it on the string. Place it square to the string. **DO NOT SET A NOCK POINT ON THE STRING YET!** Loosen the post screw, slide the vertical post up until the arrow is held gently between the brushes and the bottom support. Tighten the lock screw until snug. **Do not over-tighten.**



3. (Figure 3) **Adjust the rest for centershot.** Loosen the horizontal adjustment screw on the bracket. Slide the rest in or out until proper centershot is achieved. Tighten the lock screw until snug. **Do not over-tighten.**



4. (Figure 4) **Adjust the rest for correct vertical height.** Loosen the vertical adjustment screw found at the end of the silver shaft. Slide the rest window up or down until the arrow is centered vertically in the mounting hole (Figure 5) on the side of the riser.



5. (Figure 5) **Set the nock point.** Adjust the arrow until it is square to the string. Clamp a nock point above the top edge of the arrow's nock.

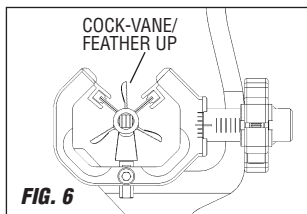
SET-UP AND TUNING TIP: Some brands of bows shoot best when the nock point is set 1/8" to 3/8" above square.

6. (Figures 6 & 7) **Orient the nocks on your arrows so the "cock" feathers/vanes are pointed straight up.** Shooting arrows with the feathers/vanes in any configuration other than cock-fletch up may result in damage to the fletching and the rest.

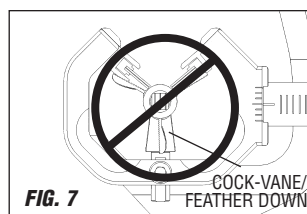
7. **The rest is ready to shoot and be fine tuned.** The arrow should slide easily through the rest without excessive drag.

8. **Paper tune the bow if desired for most accurate shooting.**

SET-UP AND TUNING TIP: A high tear usually indicates that the nock needs to be moved up. See our website's tuning tips section for the most up-to-date help at www.newarchery.com.



RIGHT



WRONG